

# Crime & Public Order Impacts

## of Supervised Consumption Services

Opponents of proposed SCS are worried that crime and disorder will worsen in the surrounding area. Most research has found that SCS do not negatively impact crime and public disorder in their surrounding communities.

### SCS

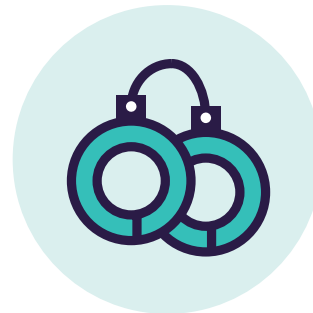
**Supervised Consumption Services** are federally approved services where people use drugs, are monitored for overdose, and receive medical assistance from trained staff in the event of an emergency.



Less public drug use



Fewer publicly discarded needles



Decreases or no changes in violent crime



Mixed findings on property crime, loitering and other public nuisances



No verified changes in drug trafficking